

MinWool-1200 Typical Sound Barrier Assemblies

High Temperature Insulation

Description

IIG MinWool-1200 Sound Attenuation Fire Batt Insulation is made of inorganic fibers derived from basalt, a volcanic rock, with a thermosetting resin binder. The fibers are bonded and formed into flexible batts. The product is manufactured in thicknesses from 1" to 6" (25 mm to 152 mm), and comes in standard metal frame widths. Sound Attenuation Fire Batt Insulation is not available with a facing.

Applications

MinWool-1200 Sound Attenuation Fire Batt Insulation is designed to deliver noise control in metal stud wall cavities of interior partitions or above suspended ceiling systems.

Available Types

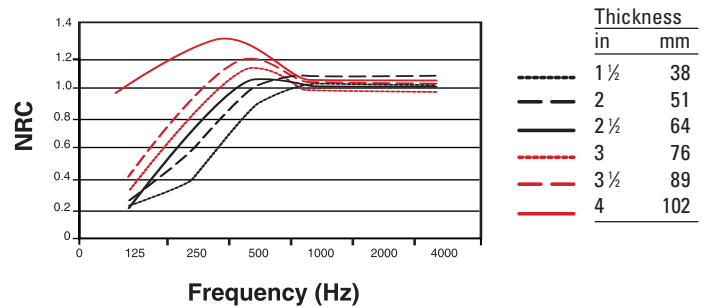
Standard Sizes 16" x 48" (406 mm x 1219 mm)
24" x 48" (610 mm x 1219 mm)
Standard Thicknesses: 1" to 6" (25 mm to 152 mm)
in 1/2" (13 mm) increments.
Custom sizes are also available on a made-to-order basis.

Unique Bio-Soluble Fiber.

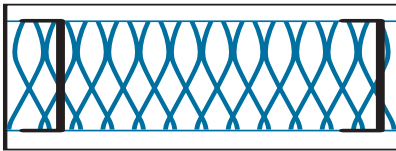
To ensure these products are free from health risk, their chemical compositions have been formulated to make the fibers bio-soluble, meaning they are more quickly dissolved in bodily fluids and eliminated by the body's natural functions. However, they retain their superior thermal, acoustical and fire-resistant properties.



Acoustical Performance

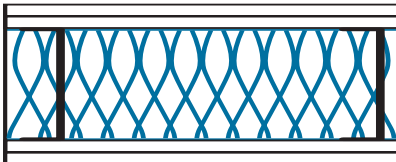


Typical Sound Barrier Assemblies



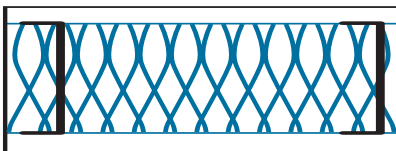
STC 46: Single layer of 1/2" (13 mm) gypsum drywall on each side of 2 1/2" (64 mm) steel stud with 2" (51 mm) MinWool batt

STC 48: Single layer of 5/8" (16 mm) gypsum drywall on each side of 2 1/2" (64 mm) steel stud with 2" (51 mm) MinWool batt



STC 53: Double layer of 1/2" (13 mm) gypsum drywall on each side of 2 1/2" (64 mm) steel stud with 2" (51 mm) MinWool batt

STC 58: Double layer of 5/8" (16 mm) gypsum drywall on each side of 2 1/2" (64 mm) steel stud with 2" (51 mm) MinWool batt

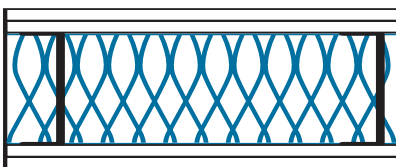


STC 48: Single layer of 1/2" (13 mm) gypsum drywall on each side of 3" (92 mm) steel stud with 2" (51 mm) MinWool batt

STC 51: Single layer of 1/2" (13 mm) gypsum drywall on each side of 3" (92 mm) steel stud with 3" (76 mm) MinWool batt

STC 49: Single layer of 5/8" (16 mm) gypsum drywall on each side of 3" (92 mm) steel stud with 2" (51 mm) MinWool batt

STC 51: Single layer of 5/8" (16 mm) gypsum drywall on each side of 3" (92 mm) steel stud with 3" (76 mm) MinWool batt



STC 56: Double layer of 1/2" (13 mm) gypsum drywall on each side of 3" (92 mm) steel stud with 2" (51 mm) MinWool batt

STC 57: Double layer of 1/2" (13 mm) gypsum drywall on each side of 3" (92 mm) steel stud with 3" (76 mm) MinWool batt

STC 58: Double layer of 5/8" (16 mm) gypsum drywall on each side of 3" (92 mm) steel stud with 2" (51 mm) MinWool batt

STC 59: Double layer of 5/8" (16 mm) gypsum drywall on each side of 3" (92 mm) steel stud with 3" (76 mm) MinWool batt

MinWool-1200 Typical Sound Barrier Assemblies

High Temperature Insulation

Specification Compliance

EU Protocol for Bio-Soluble Fiber	Passes
ASTM C 665	Type 1
Flame Spread/Smoke Developed, ASTM E 84 , UL 723, CAN/ULC-S102-M	Unfaced 5/0
Water Vapor Sorption, ASTM C 1104	<1% By Weight at 120°F (49°C), 95% RH
ASTM E 136	Noncombustible
City of New York	MEA-346-90
ICBO (Uniform Building Code)	All Building Classification Types
BOCA (National Building Code)	All Building Classification Types
SBCCI (Standard Building Code)	All Building Classification Types
ICC (International Building Code)	All Building Classification Types

Thermal Performance

Nominal Density25 pcf (40 kgs/m ³)
R-Value, ASTM C 518	3.8 per inch (0.67 per 25 mm) of Thickness

Acoustical Performance

Thickness (in) (mm)	Sound Absorption Coefficients							
	1/3 Octave Band Center Frequencies, Hz							
	125	250	500	1000	2000	4000	NRC	
1½ 38	0.23	0.42	0.89	1.03	1.03	1.03	0.85	
2 51	0.27	0.55	1.07	1.10	1.10	1.10	0.95	
2½ 64	0.25	0.77	1.10	1.04	0.98	0.98	1.00	
3 76	0.34	0.92	1.16	1.04	0.98	0.98	1.05	
3½ 89	0.41	1.01	1.20	1.06	1.06	1.05	1.10	
4 102	0.97	1.28	1.25	1.10	1.10	1.09	1.20	

Government Certification

When ordering material to comply with any government specification or any other listed specification, a statement of that fact must appear on the purchase order. Government regulations and other listed specifications require specific lot testing, and prohibit the certification of compliance after shipment has been made. There may be additional charges associated with specification compliance testing. Please refer to price page IIG-CSP-3 for Certification Procedures and Charges. Call customer service for more information.

**For Customer Service
and Order Placement**
(866) 444-4380
Fax: (866) 444-4766

**For Sales
Information**
(800) 866-3234
Fax: (877) 758-6096

**For Technical
Information**
(800) 872-0338
Fax: (970) 858-9641



IIG MinWool, LLC
A Calsiite/Johns Manville Joint Venture

908 John Bussey Drive
Phenix City, AL 36869
www.iig-llc.com

The physical and chemical properties of the MinWool-1200 Typical Sound Barrier Assemblies presented herein represent typical, average values obtained in accordance with accepted test methods and are subject to normal manufacturing variations. They are supplied as a technical service and are subject to change without notice. Numerical flame spread and smoke developed ratings are not intended to reflect hazards presented by these or any other materials under actual fire conditions. Check with the Customer Service Office to assure current information. **All Industrial Insulation Group products are sold subject to the IIG Limited Warranty and Limitation of Remedy. For a copy of the IIG Limited Warranty and Limitation of Remedy, call (800) 334-7997.**